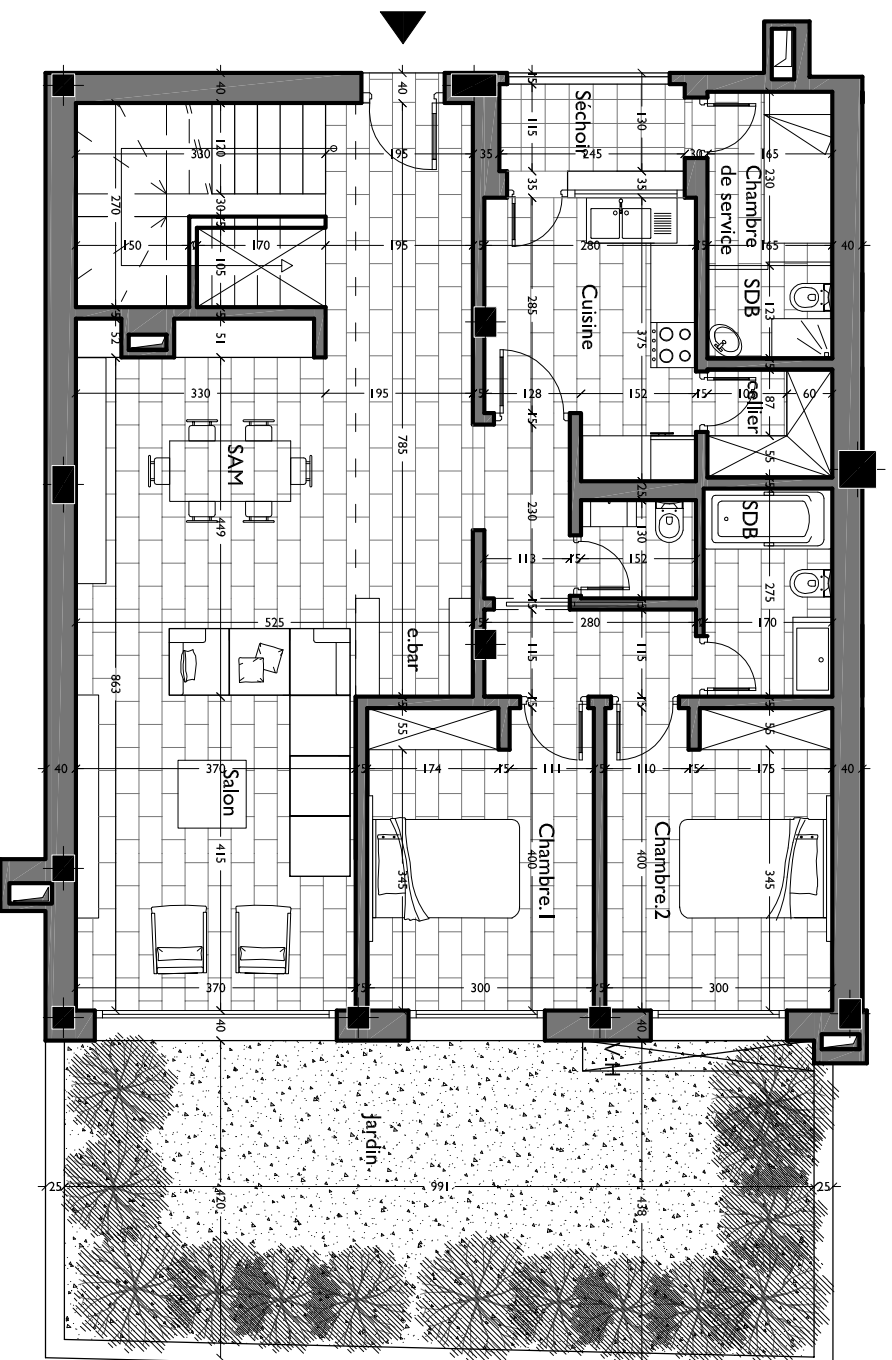
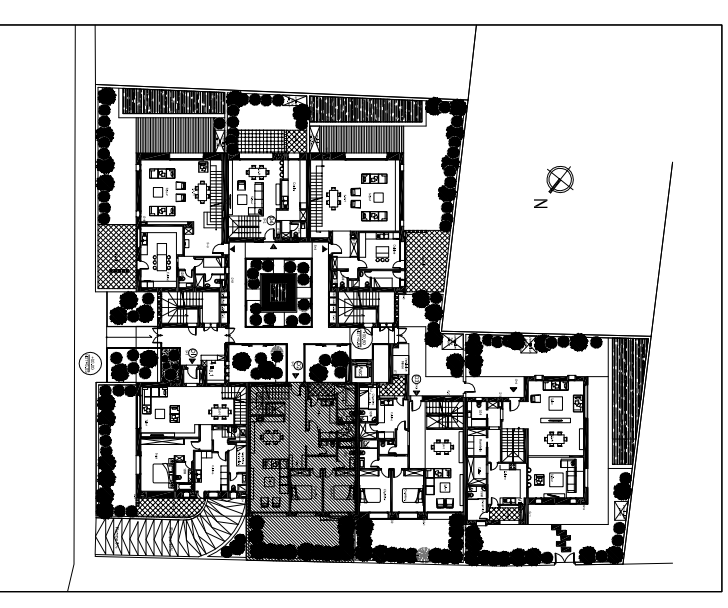


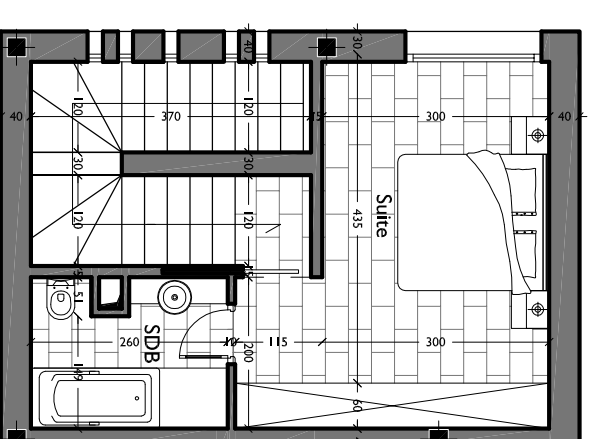
Résidence l'ODEON

Sidi DAOUED

Appartement:	D2
Type:	S+3
Niveau:	RDC et 1er étage



1er niveau



2ème niveau

Surface utile:	141.39m ²
Surface hors oeuvre:	169.64m ²
Surface terrasse couverte	3.18m ²
Surface terrasse non couverte	-
Surface jardin privée	44.86m ²