

MAKATEB EL HORCHANI

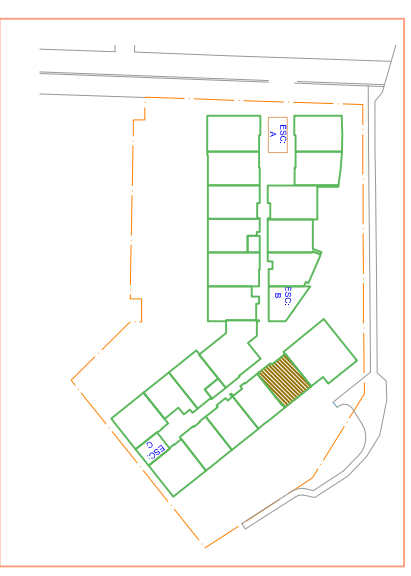
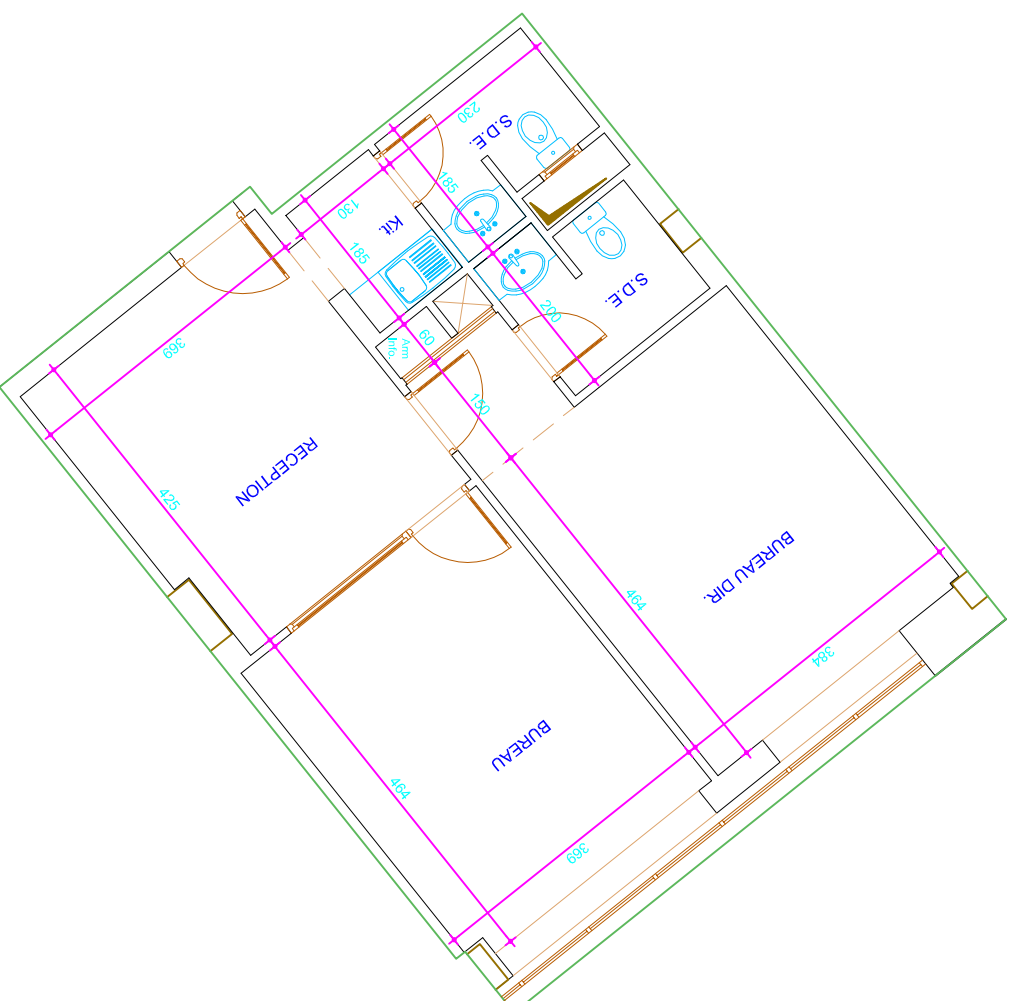
PROJET DE CONSTRUCTION D'UN IMMEUBLE

A USAGE DE BUREAUX

LOT B18-19 CENTRE URBAIN NORD

BLOC B 6 EME ETAGE

BUREAU B6-6



BUREAU DIR.	32.60	M2
BUREAU	24.60	M2
PLACARD	00.30	M2
RECEPTION	18.75	M2
KITCHINETTE	02.40	M2
W.C.	07.60	M2
ARM INFO.	00.50	M2
SURFACE HORS OEUVRE	76.55	M2
QUOTE PART PARTIES COMMUNES	18.75	M2
SURFACE TOTALE	95.30	M2