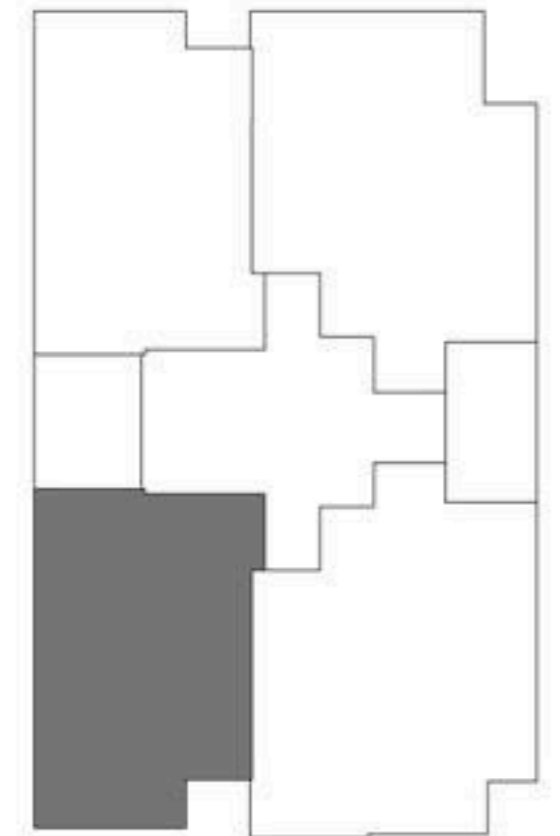
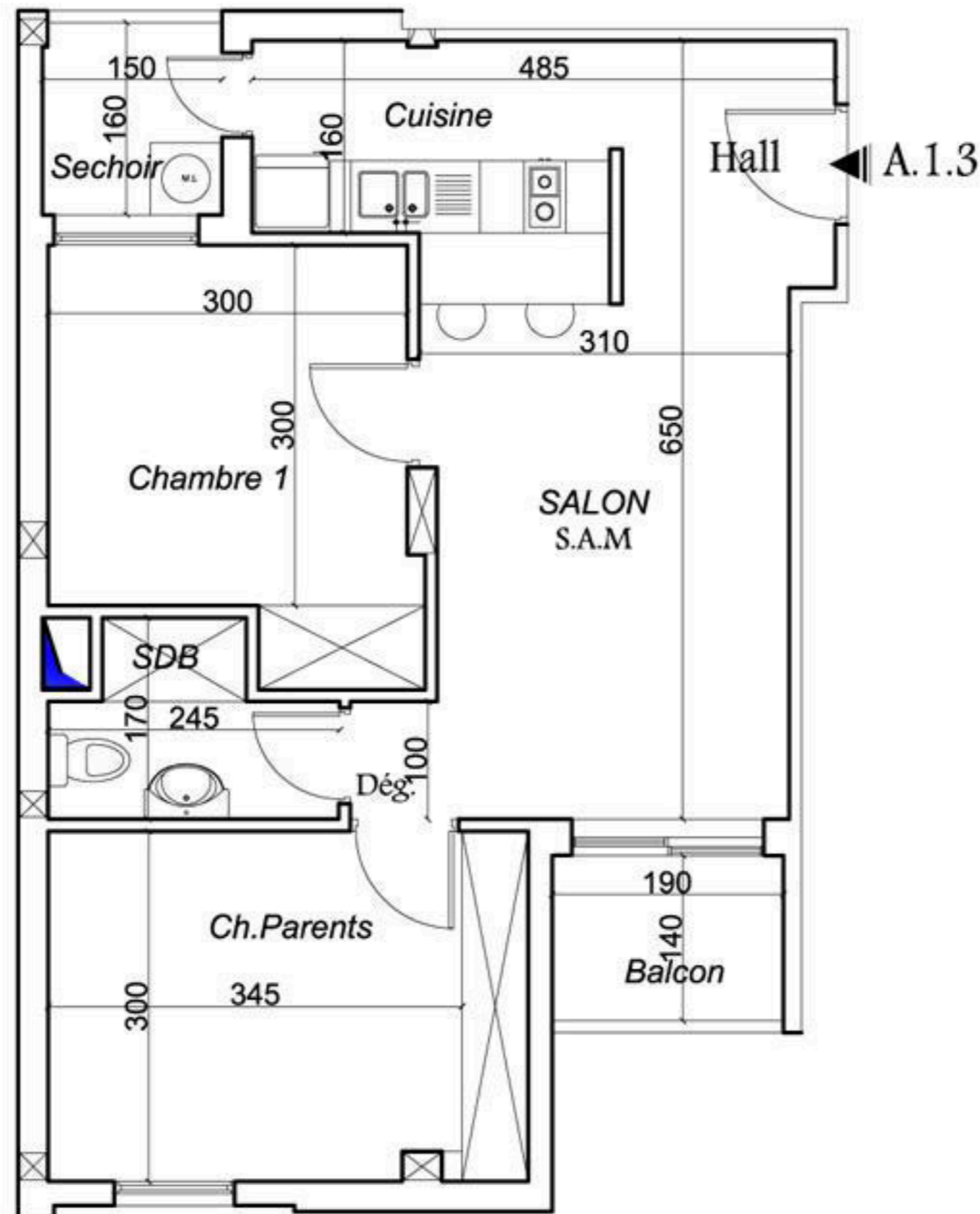


PROJET:  
CONSTRUCTION D'UNE RESIDENCE A  
VOCATION D'HABITAT ET COMMERCE  
SIS A LA RUE DU CAMEROUN  
TUNIS- LA FAYETTE

1er ETAGE      Type: **S+2**  
Appartement:  
N° A.1.3



PLAN MASSE



DESIGNATION	SURFACE (m²) APPROXIMATIVE
SURFACE HORS OEUVRE	<b>63</b>
Surf Partie commune :	<b>13</b>
<b>Surf Vendable :</b>	<b>76</b>

**S+2**